

**ELECTRIC  
PALLET TRUCKS**



**BER30-9/BER40-9**  
6,000/8,000 lb. Capacity  
Electric Rider Pallet Truck, 24V



**BW23S-7**  
4,500 lb. Capacity  
Electric Walkie Pallet, 24V



**BWC33S-7**  
6,500 lb. Capacity  
Electric Rider Pallet, 24V

**ELECTRIC  
STACKERS**



**BWP17S-7**  
3,300 lb. Capacity  
Electric Walkie Reach, 24V



**BWS17S-7**  
3,300 lb. Capacity  
Electric Walkie Stacker, 24V



**BWT45S-7**  
10,000 lb. Capacity  
Electric Tow Tractor, 24V

**ELECTRIC  
WAREHOUSE VEHICLES**

**ELECTRIC  
WAREHOUSE VEHICLES**



**BUV03S-7**  
600 lb. Capacity  
Electric Personnel Carrier, 24V



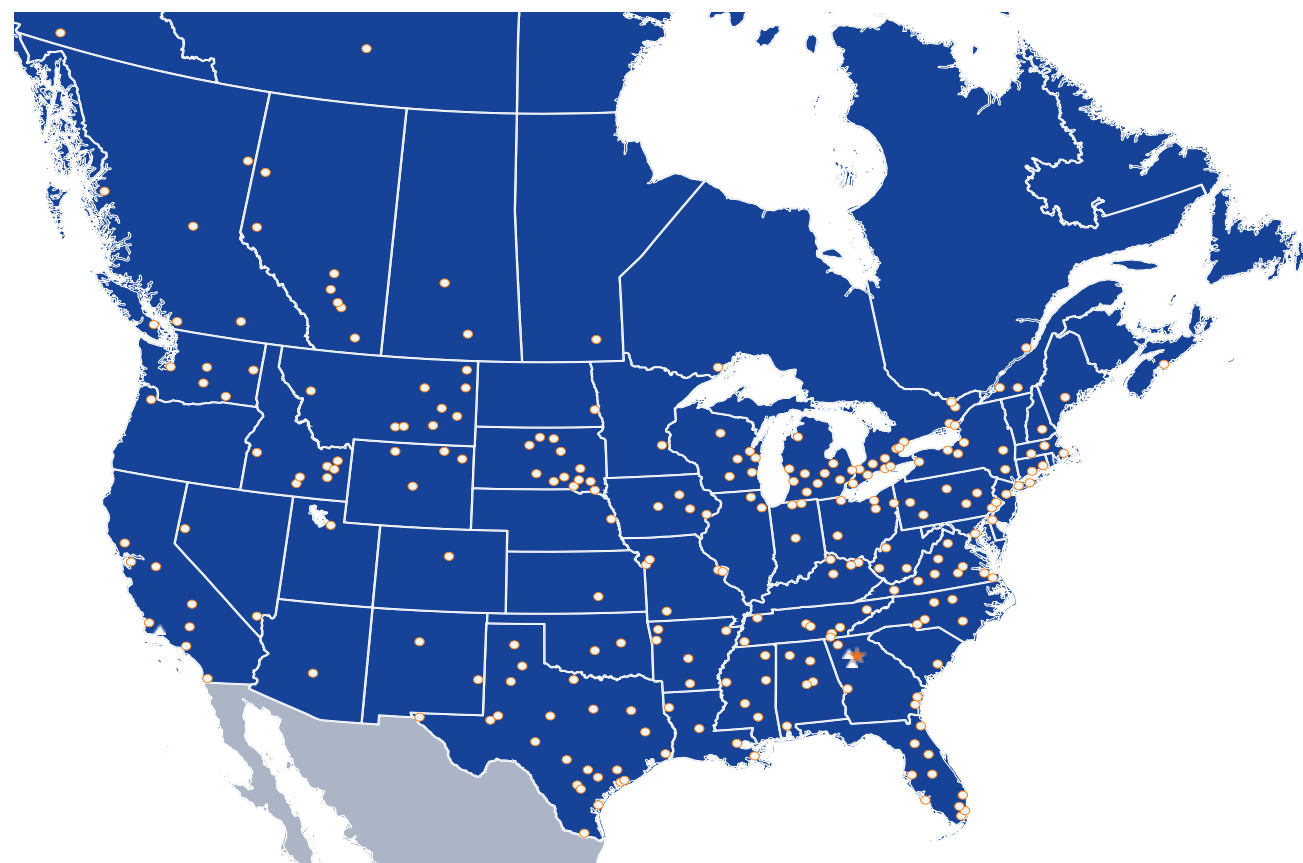
**BSC05S-7**  
900 lb. Capacity  
Electric Stock Chaser, 24V



**BBC23S/28S-7**  
4,400/6,600 lb. Capacity  
Electric Burden Carrier, 48V

**CUSTOMER SUPPORT**

The ownership of a Doosan forklift comes with a high quality, responsive customer support team. As a Doosan customer, your authorized factory-trained dealer provides the best after-sales service and support, backed by Doosan's own customer service center. In addition, Doosan's excellent parts fill rate ensures minimal downtime.



**DOOSAN'S NORTH AMERICAN DEALER NETWORK**

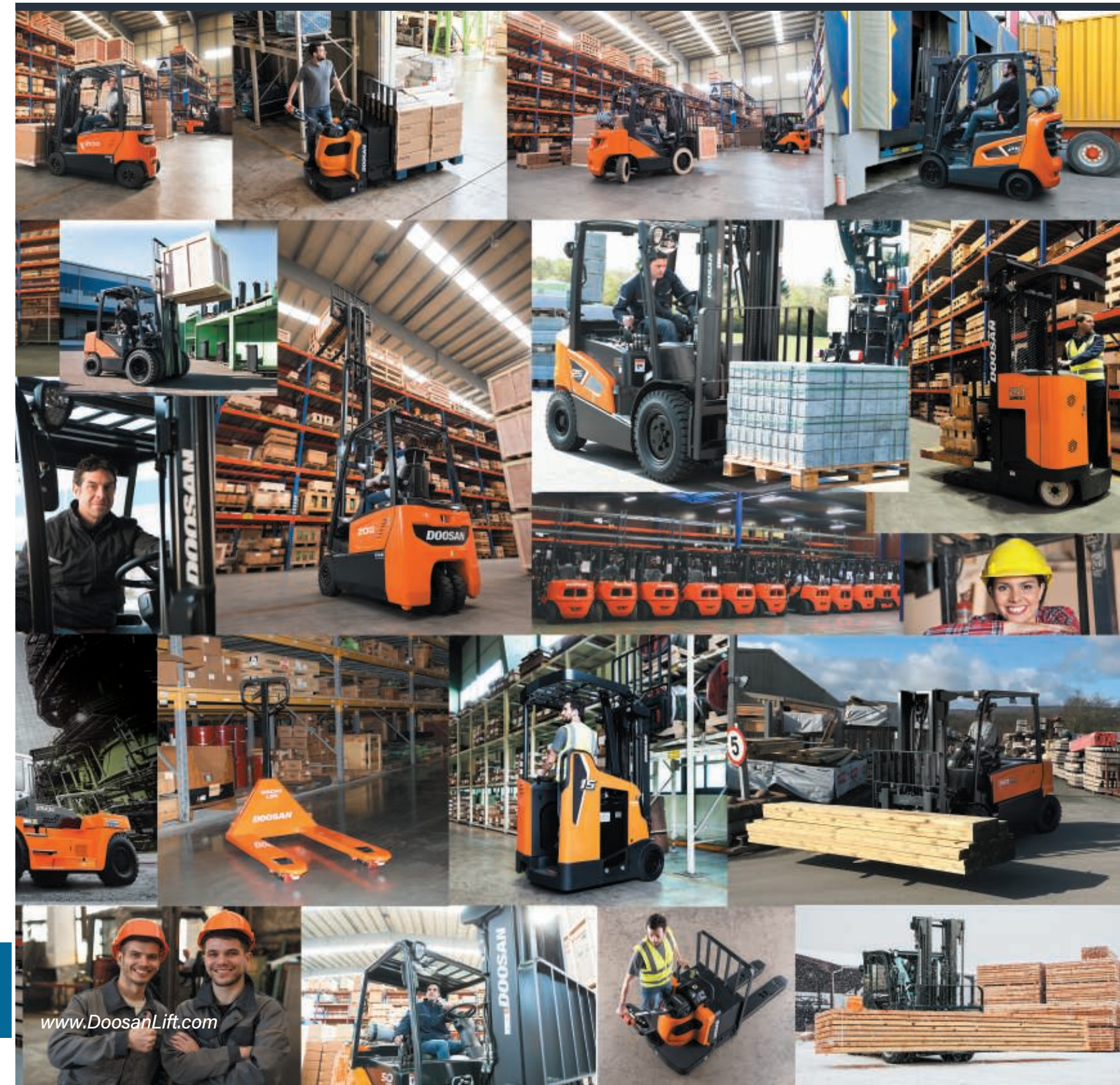
Doosan is a global manufacturer of quality forklifts and warehouse equipment with a presence in 89 countries and 179 different product models ranging from 3,000 to 55,000 pounds. From energy efficient electrics to robust internal combustion forklifts, Doosan is your full-line provider.



Doosan Industrial Vehicle America Corp.  
2475 Mill Center Parkway Suite #400  
Buford, GA 30518 US  
Tel: 678-745-2200 Fax: 678-745-2250  
www.DoosanLift.com

PDTLNE2022-V1

**DOOSAN FORKLIFTS**  
**FULL PRODUCT LINE**  
3,000 lb. to 55,000 lb. Capacity



www.DoosanLift.com

**ELECTRIC  
SIT-DOWNS**



**DIESEL PNEUMATICS  
9 SERIES**



**B15T/B18T/ B20T-7**  
3,000/3,500/4,000 lb. Capacity  
3-Wheel Pneumatic Tire Electric, 36V/48V

**BC15S/BC18S-5, BC20SC-5**  
3,000/3,500/4,000 lb. Capacity  
Cushion Tire Electric, 36/48V

**BC20S/BC25S/BC30S/ BC32S-7,  
BC25SE-7**  
4,000/5,000/6,000/6,500 lb. Capacity  
4-Wheel Cushion Tire Electric, 36/48V

**G15S/G18S/G20SC-5**  
3,000/3,500/4,000 lb. Capacity  
Pneumatic Tire IC (LP)

**G20N/G25N/G30N/G33N/G35NC-7  
G20E/G25E/G30E/G33E/FG35EC-7**  
4,000/5,000/6,000/6,500/7,000 lb. Capacity  
Pneumatic Tire IC (LP/DF)

**D20S/D25S/D30S/D33S, D35C-9**  
4,000/5,000/6,000/6,500, 7,000 lb. Cap.  
Pneumatic Tire IC (Diesel)

**D35S/D40S/D45S, D50C/D55C-9**  
8,000/9,000/10,000; 11,000/12,000 lb. Cap.  
Pneumatic Tire IC (Diesel)



**B16X/B18X/B20X-7**  
3,200/3,600/4,000 lb. Capacity  
Pneumatic Tire Electric, 48V

**B22X/B25X/B30X/B35X-7**  
4,500/5,000/6,000/7,000 lb. Capacity  
Pneumatic Tire Electric, 80V

**B40X/B45X/B50X-7**  
8,000/9,000/10,000 lb. Capacity  
Solid Soft Tire Electric, 80V

**G35S/G40S/G45S-7, G50C/G55C-7**  
8,000/9,000/10,000, 11,000/12,000 lb. Capacity  
Pneumatic Tire IC (LP/DF)

**G60S/G70S-7**  
13,500/15,500 lb. Capacity  
Pneumatic Tire IC (LP)

**D60S/D70S/D80S/D90S-9**  
13,500/15,500/17,500/20,000 lb. Capacity  
Pneumatic Tire IC (Diesel)

**ELECTRIC  
STAND-UPS**



**B15SU-9/B18SU-9/B20SU-9**  
3,000/3,500/4,000 lb. Capacity  
Cushion Tire Electric Stand-Up Rider, 36V

**B15OP-9**  
3,000 lb. Capacity  
Electric High Level Order Picker, 24V

**BR18-7 PLUS/BR20SP-7 PLUS**  
3,500/4,000 lb. Capacity  
Electric Pantograph Reach Truck, 36V

**GC15S/GC18S/GC20SC-9**  
3,000/3,500/4,000 lb. Capacity  
Cushion Tire IC (LP)

**GC20S/GC25S/GC30S/GC33S-9**  
4,000/5,000/6,000/6,500 lb. Capacity  
Cushion Tire IC (LP)

**GC35S/GC45S/GC55C-9  
GC35BCS/GC45BCS/GC55BCS-9**  
8,000/10,000/12,000 lb. Capacity  
Cushion Tire IC (LP)

**D100S/D120S/D140S/D160S-7**  
22,000/26,000/31,000/36,000 lb. Capacity  
Pneumatic Tire IC (Diesel)

**DV180S/DV250S-7**  
40,000/55,000 lb. Capacity  
Pneumatic Tire IC (Diesel)

**LPG/DUAL FUELS  
PNEUMATICS**



**LPG CUSHIONS  
9 SERIES**



**DIESEL PNEUMATICS  
7 SERIES**

