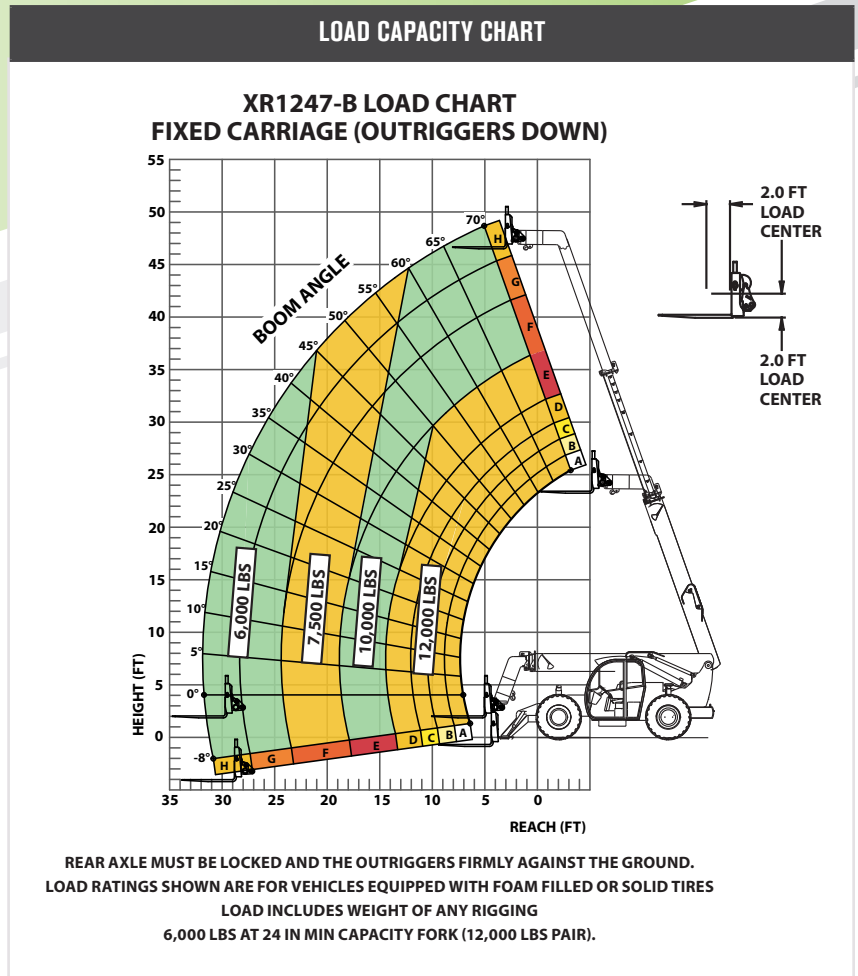


SPECIFICATIONS		
Lift capacity	12,000 lbs	5,443kg
Max lift height	47'	14.3m
Forward reach	31' 6"	9.6m
Frame leveling L/R	11°	
Weight*	37,200 lbs	16,873kg
Engine (Cummins 3.8L)	120 hp (Tier 4F)	
Axles	Dana 213	
Transmission	Dana T20000	
Fuel capacity	50 gal	189.2L
Tires	foam filled 15.5 x 25	
Hydraulic flow (per min)	49 gal	185.4L
Hydraulic pressure	3,500 psi	241.3bar
Hydraulic oil capacity	62 gal	234.7L
Length to fork face	21' 3"	6.47m
Width	101"	2.56m
Height	8' 1"	2.46m
Wheelbase	125"	3.18m
Ground clearance	16.5"	419mm
Turning radius	12'	3.66m

\*Weight based on open cab model with foam filled tires.



### STANDARD FEATURES

360° operator visibility	Ductile steel manifold
Suspension seat	Easy cab mounted grab handles
Easy service access	Master disconnect switch
Protected tilt & extend cylinders	Boom lift point
Steel hydraulic & fuel tanks	Manual lowering valve (cylinders)
Long life Lexan labels	Large cross section boom
Heavy duty boom chains	Easy tie downs
Suspended pedals	"Y" frame handle
Large capacity fuel tank	Heavy duty pre-cleaner
Trunnion mounted sway cylinders	Additional high pressure hydraulic filter
Melonite pins	Individual gauges/switches
Standard auxiliary hydraulics	Steel hood
Steel dash	Solid steel plate chassis
Center mounted powertrain	Rear axle stabilization (RAS)
Long life boom rollers	Wider outrigger stance
Dual batteries	Back up alarm with light
Cab step	Electrical aux hydraulic control